



TV-C143

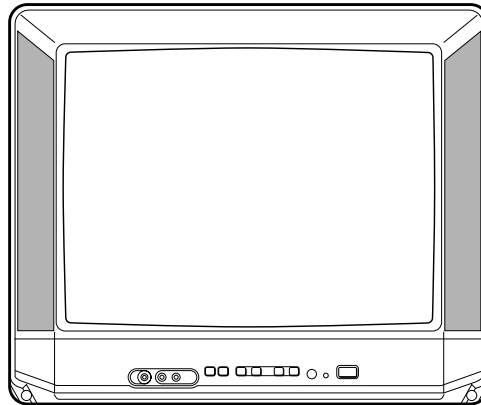
KE

TV-C1418

KER

TV-C2018

KER



SERVICE MANUAL

COLOR TELEVISION

MODEL	TYPE
TV-C143	KEJG6C1M
TV-C1418	KER7S4M, KER7L4M
TV-C2018	KER7S4M

- This Service Manual contains information about the difference between TV-C143/1418/2018 (KE,KER) and TV-C143 (KERJ71M). If requiring the other information, see Service Manual of TV-C143 (KERJ71M), (S/M Code No. 09-99A-419-0R1).

aiwa

S/M Code No. 09-00A-419-0S4

SUPPLEMENT
DATA

SPECIFICATIONS

Tuner System	Frequency synthesized tuner
TV System	PAL (B/G,D/K), SECAM(B/G,D/K,K1)
Video input color system	PAL, SECAM, NTSC3.58, NTSC4.43
Channel Coverage	VHF: E2 to E12, R1 to R12 UHF: 21 to 69 CATV: S1 to S41
Program Memory	100 TV stations
Aerial Input	75 ohms, unbalanced
Picture Tube	TV-C143/C1418: 14" TV-C2018: 20"
Screen Size	TV-C143/C1418: 280.8 (W) X 210.6(H) mm (11 ¹ / ₈ X 8 ³ / ₈ in.) 335.4 mm (diagonal) (13 ¹ / ₄ in.) TV-C2018: 404.4 (W) X 303.3 (H) mm (16 X 12 in.) 480 mm (diagonal) (19 in.)
Video input /output	1 Vp-p, 75 ohms
Audio input	0.5 Vrms., 33 k ohms
Audio output	0.5 Vrms., less than 2.2 k ohms
Speakers	77 mm (3 in.) round
Operating Voltage	110 V - 240 V AC, 50/60 Hz
Power consumption	TV-C143/C1418: 80 W TV-C2018: 85 W
Earphone jack	Monaural-mini jack
Operating Temperature	5°C to 40°C
Operating Humidity	35% to 80%
Dimensions	TV-C143/C1418: 364 (W) X 315 (H) X 365.5 (D) mm (14 ³ / ₈ x 12 ¹ / ₂ x 14 ¹ / ₂ in.) TV-C2018: 510 (W) X 425 (H) X 483.5 (D) mm (20 ¹ / ₈ X 16 ³ / ₄ X 19 ¹ / ₈ in.)
Weight	TV-C143/C1418: 9.2 kg (20.2 lbs.) TV-C2018: 18.2 kg (40 lbs)

- Design and specifications are subject to change without notice.

ACCESSORIES / PACKAGE LIST

REF. NO.	PART NO.	KANRI NO.	DESCRIPTION
1	8Z-JB6-901-210	IB, KER	(ERAP) -M<1418, 2018>
1	8Z-JB8-901-010	IB, KE (T)	C143-T<143>
2	8Z-JB6-951-010	RC UNIT, RC-ZVT15	
3	8Z-JB6-610-010	ANT ASSY, TV 5 SEC (PAL) PT C	

NOTICES BEFORE REPAIRING

To make the best use of this equipment, make sure to obey the following items when repairing (or mending).

1. Do not damage or melt the tunicate of the leading wire on the AC1 side, including the power supply cord.
2. Do not soil or stain the letters on the spec. inscription plates, notice labels, fuse labels, etc.
3. When repairing the part extracted from the conducted side of the board pattern, fix it firmly with applying bond to the pattern and the part.
4. Restore the following items after repairing.
 - 1) Conditions of soldering of the wires (especially, the distance on the AC1 side).
 - 2) Conditions of wiring, bundling of wires, etc.
 - 3) Types of the wires.
 - 4) Attachment conditions of all types of the insulation.
5. After repairing, always measure the insulation resistance and perform the voltage-withstand test (See Fig-1).
 - 1) The insulation resistance must be 7.0 ~ 9.5 M Ω when applying 500V per second.
 - 2) In the voltage withstand test, apply 3 kV for 1 min and check that the GO lamp lights.

- * Breaking current set to 6 mA.
- * Connect the safety checker as shown in Fig-1, then measure the resistance and perform the test.
- * Do not touch the equipment during testing.
- * For details of the safety checker, refer to the supplied Operation manual.

Insulation resistance: 7.0 ~ 9.5 M Ω (500 V/s)
Voltage-withstand: 3 kV for 1 min

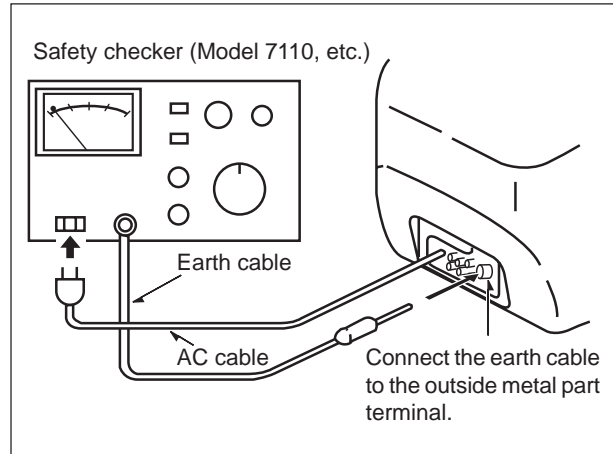


Fig-1

When servicing and checking on the TV, note the followings.

1. Keep the notices.

As for the places which need special attentions, they are indicated with labels or seals on the cabinet, chassis and parts. Make sure to keep the indications and notices in the operation manual.
2. Avoid an electric shock.

There is a high voltage part inside. Avoid an electric shock while the electric current is flowing.
3. Use the designated parts.

The parts in this equipment have the specific characteristics of incombustibility and withstand voltage for safety.
Therefore, use a part which has the same character as the replaced part. Especially as to the important parts for safety which is indicated in the circuit diagram or the table of parts with a Δ mark, the designated parts must be used.
4. Put parts and wires in the original position after assembling or wiring.

There are parts which use the insulation material such as a tube or tape for safety, or which are assembled so that these parts do not make contact with the printed
5. Take care of the cathode-ray tube.

By setting an explosion-proof cathode-ray tube in this equipment, safety is secured against implosion. However, when removing it or servicing from the back, it gives out shock that is dangerous. Take enough care to deal with it.
6. Avoid an X-ray.

Safety is secured against an X-ray by giving considerations to the cathode-ray tube and the high voltage peripheral circuit, etc. Therefore, when repairing the high voltage peripheral circuit, use the designated parts and do not change the circuit. Repairing, except indicates, causes rising of high voltage, and the cathode-ray tube emits an X-ray.
7. Perform a safety check after servicing.

Confirm that the screws, parts and wiring which were removed in order to service are put in the original positions, or whether there are deteriorated portions around the places serviced.

Δ Safety Components Symbol

This symbol is given to important parts which serve to maintain the safety of the product, and which are made to confirm to special Safety Specifications.
Therefore, when replacing a component with this symbol make absolutely sure that you use a designated part.

ELETRICAL MAIN PARTS LIST

REF. NO.	PART NO.	KANRI NO.	DESCRIPTION	REF. NO.	PART NO.	KANRI NO.	DESCRIPTION
IC				C32	87-018-115-080		CAP, CER 47P-50V
	8Z-JB9-651-010		IC,TMP87CP38N-IE60	C33	87-018-115-080		CAP, CER 47P-50V
	87-A21-133-080		IC,BMR-0101D	C34	87-018-119-080		CAP, CER 100P-50V
	87-A90-111-010		RCR UNIT,GP1U281Y	C35	87-018-119-080		CAP, CER 100P-50V
	87-017-804-010		IC,BU4052BC	C36	87-010-263-080		CAP, ELECT 100-10V
	87-A21-165-010		IC,TB1240AN	C101	87-010-404-080		CAP, ELECT 4.7-50V
	87-A21-166-010		IC,TA1275AZ	C102	87-018-134-080		CAPACITOR,TC-U 0.01-16
	87-A21-285-010		IC,TDA7056B	C103	87-018-134-080		CAPACITOR,TC-U 0.01-16
	87-070-237-010		IC,LA7832	C104	87-010-384-080		CAP, ELECT 100-25V
	87-A20-517-010		IC,STR-S6707	C105	87-010-263-080		CAP, ELECT 100-10V
	87-020-881-080		IC,NJM78L05A	C110	87-018-134-080		CAPACITOR,TC-U 0.01-16
	87-A21-433-010		IC,KS24C041I	C201	87-018-131-080		CAP, CER 1000P-50V
	87-A21-787-010		IC,KIA7805API	C204	87-010-401-080		CAP, ELECT 1-50V
	87-A21-788-010		IC,KIA7809API	C205	87-018-119-080		CAP, CER 100P-50V
				C211	87-010-384-080		CAP, ELECT 100-25V
TRANSISTOR				C212	87-018-134-080		CAPACITOR,TC-U 0.01-16
	87-026-610-080		TR,KTC3198GR	C213	87-018-134-080		CAPACITOR,TC-U 0.01-16
	87-A30-090-080		FET,2SK2541	C214	87-018-134-080		CAPACITOR,TC-U 0.01-16
	87-026-609-080		TR,KTA1266GR	C215	87-010-405-080		CAP, ELECT 10-50V
	89-332-712-010		TR,2SC3271FN	C216	87-A12-364-080		CAP,M 0.01-100 J CP
	89-334-674-580		TR,2SC3467 D/E	C217	87-010-401-080		CAP, ELECT 1-50V
	87-A30-322-010		TR,2SD2586<2018>	C219	87-010-400-080		CAP, ELECT 0.47-50V
	87-A30-323-010		TR,2SD2599<143/1418>	C221	87-018-134-080		CAPACITOR,TC-U 0.01-16
	87-A30-041-110		TR,SE115N	C222	87-010-260-080		CAP,E 47-25
				C301	87-010-400-080		CAP, ELECT 0.47-50V
DIODE				C302	87-010-405-080		CAP, ELECT 10-50V
	87-A40-291-080		DIODE,1N4148 (CPT)	C303	87-018-134-080		CAPACITOR,TC-U 0.01-16
	87-070-150-080		ZENER,MTZJ33D	C304	87-010-263-080		CAP, ELECT 100-10V
	87-A40-438-080		ZENER,MTZJ4.7A	C305	87-010-405-080		CAP, ELECT 10-50V
	87-A40-235-080		ZENER,MTZJ9.1C	C306	87-010-544-080		CAP, ELECT 0.1-50V
	87-A40-234-080		ZENER,MTZJ5.6A	C308	87-010-400-080		CAP, ELECT 0.47-50V
	87-017-978-080		DIODE,1N4003	C309	87-010-401-080		CAP, ELECT 1-50V
	87-A40-328-010		DIODE,GBU4JL	C312	87-018-134-080		CAPACITOR,TC-U 0.01-16
	87-A40-450-090		DIODE,RU 1P	C313	87-010-382-080		CAP, ELECT 22-25V
	87-A40-465-090		DIODE,FR202	C314	87-018-134-080		CAPACITOR,TC-U 0.01-16
	87-070-111-060		DIODE,RU30A	C315	87-010-263-080		CAP, ELECT 100-10V
	87-A40-345-080		ZENER,MTZJ10C	C316	87-010-404-080		CAP, ELECT 4.7-50V
	87-017-963-080		TVR5G<143>	C317	87-010-401-080		CAP, ELECT 1-50V
	87-A40-800-080		DIODE,FR104-F	C318	87-018-134-080		CAPACITOR,TC-U 0.01-16
	87-A40-921-080		DIODE,BAV21,133<1418/2018>	C319	87-010-263-080		CAP, ELECT 100-10V
MAIN C.B				C320	87-018-134-080		CAPACITOR,TC-U 0.01-16
BPF201	87-A90-337-010		FLTR,SAW OFW-K295	C321	87-010-384-080		CAP, ELECT 100-25V
C1	87-018-119-080		CAP, CER 100P-50V	C322	87-018-115-080		CAP, CER 47P-50V
C2	87-010-260-080		CAP, ELECT 47-25V	C323	87-010-405-080		CAP, ELECT 10-50V
C3	87-010-401-080		CAP, ELECT 1-50V	C324	87-018-115-080		CAP, CER 47P-50V
C6	87-018-104-080		CAP,TC-U 10P-50 SL	C325	87-010-235-080		CAP,E 470-16 SME
C7	87-018-104-080		CAP,TC-U 10P-50 SL	C326	87-018-134-080		CAPACITOR,TC-U 0.01-16
C8	87-010-405-080		CAP,E 10-50 M	C330	87-018-106-080		CAP,TC-U 15P-50 SL
C9	87-A11-148-080		CAP,TC U 0.1-50 Z F	C331	87-A12-356-080		CAP,M 2200P-100 J CP
C10	87-018-119-080		CAP, CER 100P-50V	C332	87-010-545-080		CAP, ELECT 0.22-50V
C11	87-018-123-080		CAP, CER 220P-50V	C333	87-018-104-080		CAP,TC-U 10P-50 SL
C12	87-010-263-080		CAP, ELECT 100-10V	C334	87-018-104-080		CAP,TC-U 10P-50 SL
C13	87-018-134-080		CAPACITOR,TC-U 0.01-16	C335	87-018-104-080		CAP,TC-U 10P-50 SL
C15	87-010-401-080		CAP, ELECT 1-50V	C336	87-A12-370-080		CAP,M 0.033-100 J CP
C18	87-018-119-080		CAP, CER 100P-50V	C337	87-A12-360-080		CAP,M 4700P-100 J CP
C19	87-018-119-080		CAP, CER 100P-50V	C338	87-018-134-080		CAPACITOR,TC-U 0.01-16
C20	87-010-400-080		CAP, ELECT 0.47-50V	C339	87-010-401-080		CAP, ELECT 1-50V
C21	87-018-119-080		CAP, CER 100P-50V	C340	87-018-119-080		CAP, CER 100P-50V
C22	87-018-119-080		CAP, CER 100P-50V	C341	87-018-121-080		CAP, CER 150P-50V
C23	87-018-119-080		CAP, CER 100P-50V	C342	87-010-401-080		CAP, ELECT 1-50V
C24	87-018-121-080		CAP, CER 150P-50V	C343	87-A12-354-080		CAP,M 1500P-100 J CP
C25	87-018-121-080		CAP, CER 150P-50V	C344	87-010-400-080		CAP, ELECT 0.47-50V
C26	87-018-121-080		CAP, CER 150P-50V	C345	87-018-123-080		CAP, CER 220P-50V
C27	87-018-121-080		CAP, CER 150P-50V	C347	87-A12-367-080		CAP,M 0.018-100 J CP
C29	87-010-403-080		CAP, ELECT 3.3-50V	C349	87-018-116-080		CAP,TC U 56P-50
C30	87-010-403-080		CAP, ELECT 3.3-50V	C350	87-018-134-080		CAPACITOR,TC-U 0.01-16
				C401	87-010-385-080		CAP, ELECT 220-25V
				C402	87-010-401-080		CAP, ELECT 1-50V
				C407	87-010-382-080		CAP, ELECT 22-25V
				C408	87-010-402-080		CAP, ELECT 2.2-50V

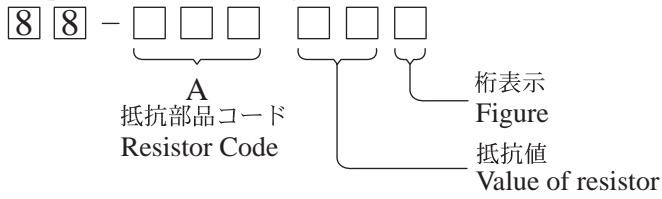
REF. NO.	PART NO.	KANRI NO.	DESCRIPTION	REF. NO.	PART NO.	KANRI NO.	DESCRIPTION
C450	87-010-405-080		CAP, ELECT 10-50V	J402	87-A60-329-110		JACK, 3.5 BLK MONO W/SW
C451	87-010-401-080		CAP, ELECT 1-50V	J403	87-A61-079-010		JACK, PIN 2P BLK-Y W/O SW
C452	87-010-405-080		CAP, ELECT 10-50V	L1	87-005-738-080		COIL, 47UH J SP02
C454	87-010-401-080		CAP, ELECT 1-50V	L2	87-005-742-080		COIL, 100UH J SP02
C455	87-010-260-080		CAP, ELECT 47-25V	L3	87-005-730-080		COIL, 10UH J SP02
C456	87-010-235-080		CAP, E 470-16 SME	L4	87-005-730-080		COIL, 10UH J SP02
C457	87-010-405-080		CAP, ELECT 10-50V	L101	87-005-440-080		COIL, 47UH FLR50
△ C601	87-010-974-080		CAP, CER 220P-500 B	L102	87-005-730-080		COIL, 10UH J SP02
C602	87-A10-469-080		CAP, CER 2200P-500 K B	L202	87-005-730-080		COIL, 10UH J SP02
△ C603	87-010-976-080		CAP, CER 1000P-500 B	L204	87-005-729-080		COIL, 8.2UH J SP02
C605	87-A10-448-090		CAP, M/P 0.47-250<143/1418>	L210	8Z-JB6-617-010		COIL, VCO KHIC-TB1240AN
C605	87-A11-054-010		CAP, M/P 0.68-250 J<2018>	L211	87-005-740-080		COIL, 68UH J SP02
C606	87-A11-252-090		CAP, 8200P-1.6<143/1418>	L301	87-005-740-080		COIL, 68UH J SP02
C606	87-A11-253-090		CAP, M/P 0.01-1.6K H<2018>	L302	87-005-730-080		COIL, 10UH J SP02
C607	87-012-397-090		CAP, CER 1000P-2K<143/1418>	L303	87-005-730-080		COIL, 10UH J SP02
C607	87-012-399-010		CAP, CER 1500P-2K<2018>	L305	87-005-432-080		COIL, 10UH
C651	87-018-127-080		CAP, CER 470P-50V	L602	87-A50-467-010		COIL, 2.2MH CW8A
C652	87-A11-132-080		CAP, TC U 0.01-50 K B	L802	87-A50-466-010		COIL, 390UH CRCH-106
C657	87-018-115-080		CAP, CER 47P-50V	△ LF801	8Z-JB6-670-010		FLTR, LINE HJC-FET24S
C658	87-018-131-080		CAP, CER 1000P-50V	△ PR802	87-A90-473-080		PROTECTOR, 3.5A 491SERIES 60V
C659	87-010-247-080		CAP, ELECT 100-50V	△ PS801	87-A30-096-010		P-TR, TLP721F
C663	87-010-397-090		CAP, E 1000-35 SME	△ PS802	87-A30-096-010		P-TR, TLP721F
C664	87-010-401-080		CAP, ELECT 1-50V	△ PT801	8Z-JB6-627-010		PT, SWT ZJB-6
△ C801	87-A10-688-010		CAP, M/P 0.22-275 K (B81133)	R110	87-A00-586-090		RES, M/F 12K-2W J B02SJ
△ C802	87-A10-688-090		CAP, M/P 0.22-275 K (B81133)	R402	87-A00-582-090		RES, M/F 2.2-1W J B01SJ
△ C806	87-A10-519-010		CAP, CER 4700P-4K M E KX	R608	87-A00-225-090		RES, M/F 2.2K-5W J RSV5
C808	87-A10-372-090		CAP, E 150-400 M SMH <143/1418>	R610	87-A00-584-090		RES, M/F 100-2W J B02SJ
C808	87-A10-646-090		CAP, E 220-400 M SMH <2018>	R803	87-A00-555-010		RES, CEM 2.2-10W J MPC722
C809	87-010-385-080		CAP, ELECT 220-25V	R804	87-A00-224-090		RES, SD 8.2M-1W J CE
C810	87-010-381-080		CAP, ELECT 330-16V	R805	87-A00-303-090		RES, M/F 82K-3W J RSS
C811	87-018-131-080		CAP, CER 1000P-50V	R806	87-A00-573-090		RES, CEM 0.33-5W J MPC71
C812	87-A10-490-080		CAP, M/P 0.022-630 K MMC	R808	87-A00-579-090		RES, M/F 22-1/2W J BOS2J
C813	87-A10-832-010		CAP, CER 1000P-1K K R LONG	R812	87-A00-589-090		RES, M/F 100K-3W J B03SJ
C814	87-A10-832-010		CAP, CER 1000P-1K K R LONG	R815	87-A00-050-060		RES, FUSE 2.2-1W J
C816	87-A10-832-010		CAP, CER 1000P-1K K R LONG	R817	87-A00-050-060		RES, FUSE 2.2-1W J
C817	87-010-384-080		CAP, ELECT 100-25V	R818	87-A00-051-060		RES, FUSE 2.7-1W J<143/1418>
C819	87-010-263-080		CAP, ELECT 100-10V	R818	87-029-131-090		RES, FUSE 1-1W<2018>
C821	87-010-396-080		CAP, E 470-35 SME	R821	87-A00-050-060		RES, FUSE 2.2-1W J
C822	87-A11-148-080		CAP, TC U 0.1-50 Z F	R831	87-029-023-090		FUSE RESISTOR 1/4W 47
C823	87-A12-051-090		CAP, E 100-160 M SK	SW1	87-A90-712-080		SW, TACT EVQ11L07K
C825	87-A12-493-080		CAP, 2200P-500 K B Y5P<143>	SW3	87-A90-712-080		SW, TACT EVQ11L07K
C825	87-A10-469-080		CAP, 2200P-500 K B DD10<1418/2018>	SW4	87-A90-712-080		SW, TACT EVQ11L07K
C827	87-010-387-080		CAP, E 470-25 SME	SW5	87-A90-712-080		SW, TACT EVQ11L07K
C831	87-016-299-080		CAP, E 10-100 M	SW6	87-A90-712-080		SW, TACT EVQ11L07K
C832	87-010-396-080		CAP, E 470-35 SME<143/1418>	△ SW801	87-A91-410-010		SW, AC PUSH 1-1-1 ESB92SH1B
C832	87-016-594-090		CAP, E 1000-35 M SSL<2018>	△ T601	8Z-JB6-605-010		TRANS, HD TB8B
C834	87-010-381-080		CAP, ELECT 330-16V	△ T602	8Z-JB8-626-010		FBT, MSU1FVK202<143/1418>
C835	87-010-382-080		CAP, ELECT 22-25V	△ T602	8Z-JB6-616-010		FBT, KFT3AA243X<2018>
C839	87-010-384-080		CAP, ELECT 100-25V	△ THP801	87-A91-485-010		POS-THMS, DGC3R300N27C<143/1418>
C840	87-A10-733-090		CAP, E 220-160 M	△ THP801	87-A91-405-010		POS-THMS, T209-B80-A10<2018>
CF203	87-008-575-080		FLTR, SFSH5.5MCEB	TU101	87-A91-495-010		TU UNIT, ENV59D58G3-38.0MHZ
CF204	87-008-576-080		FLTR, SFSH6.5MCEB	SCR801	87-A91-641-010		VRIS, SIOV-S14K300
CF205	87-008-577-080		FLTR, TPS5.5MB2	X1	87-030-212-080		CERA LOCK CST8.0M
CF207	87-008-578-080		FLTR, TPS6.5MB2	X301	8Z-JB6-619-080		VIB, XTAL 4.43MHZ A0443S
CN102	87-009-035-010		CONN, 7P PH M				
CN401	87-A60-457-010		CONN, 4P V TID-X	NK C.B			
CN601	87-099-675-010		CONN, 5P V V				
△ CN801	82-481-649-010		PLUG, 2P MINI (*)	C503	87-018-125-080		CAP, CER 330P-50V<143/1418>
△ CN802	87-A61-045-010		CONN, 2P V THL-P	C503	87-018-126-080		CAP, TC 390P-50KB<2018>
CNA301	8Z-JB6-613-010		CONN ASSY, 6P V TV-NK 2.0	C504	87-018-125-080		CAP, CER 330P-50V<143/1418>
				C504	87-018-126-080		CAP, TC 390P-50KB<2018>
CNA401	84-LB2-632-110		CONN ASSY, 4P-SP-2	C507	87-018-127-080		CAP, CER 470P-50V<143/1418>
D1	87-A40-422-010		LED, SLP-581D-51 Y-G/R				
△ FB801	87-035-458-010		FUSE, 4A 250V T W/C	C507	87-018-128-080		CAP, TC 560P-50KB<2018>
FB802	87-003-223-080		FERRITE BEAD BL02RN2	C508	87-010-379-080		CAP, ELECT 22-16V
FB805	87-003-223-080		FERRITE BEAD BL02RN2	C511	87-012-397-080		CAP, CER 1000P-2K K BN DE
FB806	87-003-223-080		FERRITE BEAD BL02RN2	CN502	87-A60-485-010		CONN, 2P V LV GRA
△ FC801	87-033-213-080		CLAMP, FUSE	R510	87-A00-586-090		RES, M/F 12K-2W J B02SJ
△ FC802	87-033-213-080		CLAMP, FUSE	R515	87-A00-586-090		RES, M/F 12K-2W J B02SJ
HL1	84-LB3-216-010		HLDR, LED	R531	87-A00-586-090		RES, M/F 12K-2W J B02SJ
J401	87-A60-680-010		JACK, PIN 4P Y-BLK HTJ-036-22	SO501	86-LBR-670-010		SOCKET, CRT 9P HPS1521<2018>

REF. NO.	PART NO.	KANRI NO.	DESCRIPTION
S0502	86-LBU-670-010		SOCKET,CRT 9P CVT33261603<143/1418>

○チップ抵抗部品コード／CHIP RESISTOR PART CODE

チップ抵抗部品コードの成り立ち

Chip Resistor Part Coding



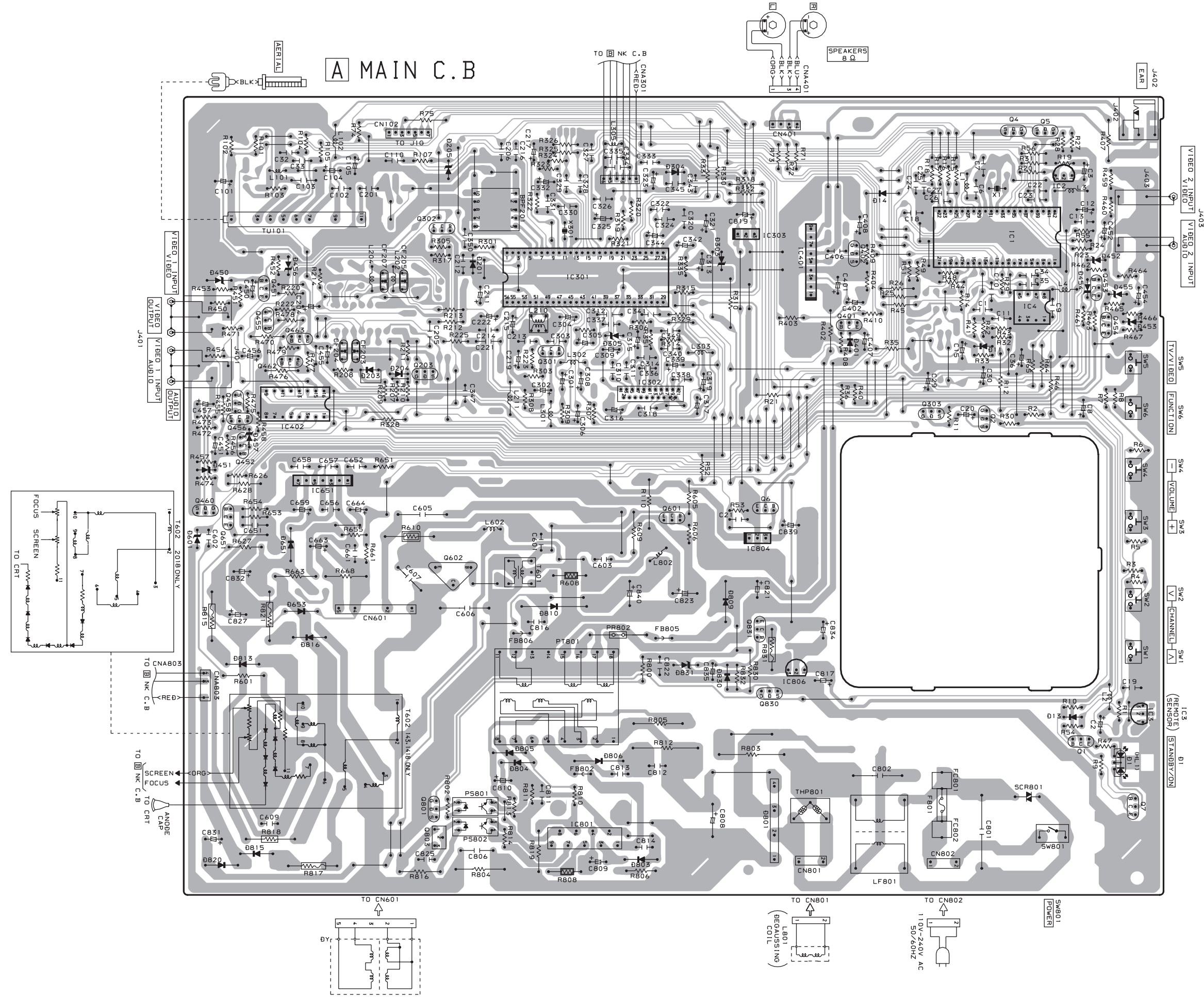
チップ抵抗
Chip resistor

容量 Wattage	種類 Type	許容誤差 Tolerance	記号 Symbol	寸法/Dimensions (mm)			抵抗コード : A Resistor Code : A	
				外形/Form	L	W		t
1/16W	1005	± 5%	CJ		1.0	0.5	0.35	104
1/16W	1608	± 5%	CJ		1.6	0.8	0.45	108
1/10W	2125	± 5%	CJ		2	1.25	0.45	118
1/8W	3216	± 5%	CJ		3.2	1.6	0.55	128

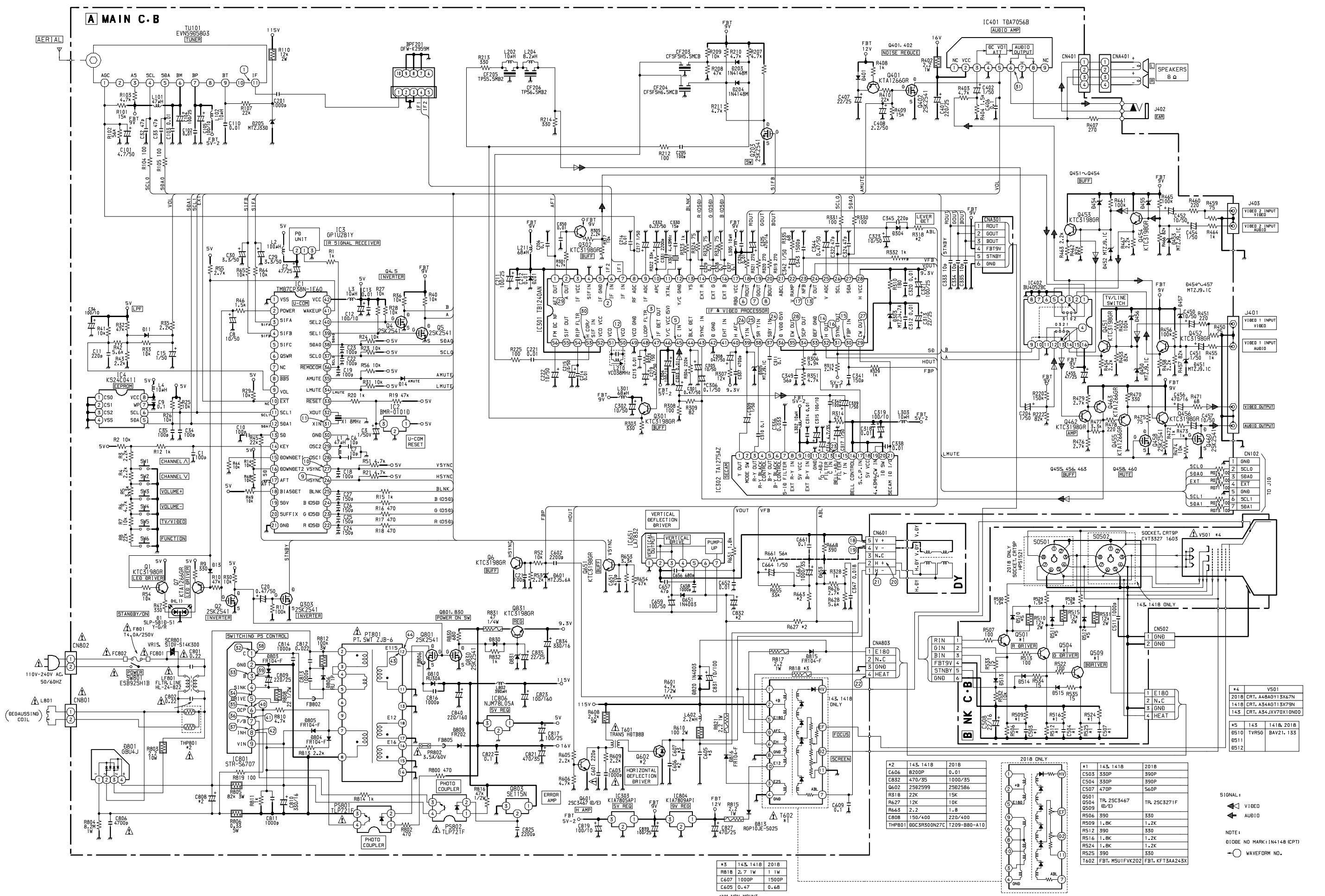
WIRING - 1 (MAIN)

32 31 30 29 28 27 26 25 24 23 22 21 20 19 18 17 16 15 14 13 12 11 10 9 8 7 6 5 4 3 2 1

A B C D E F G H I J K L M N O P Q R S T U



SCHEMATIC DIAGRAM - 1 (MAIN / NK)



WIRING - 2 (NK: 143 / 1418)

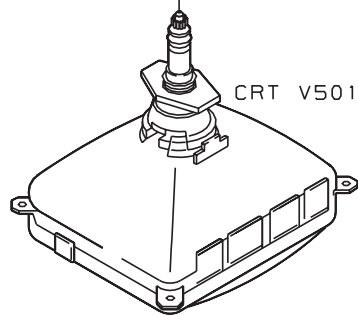
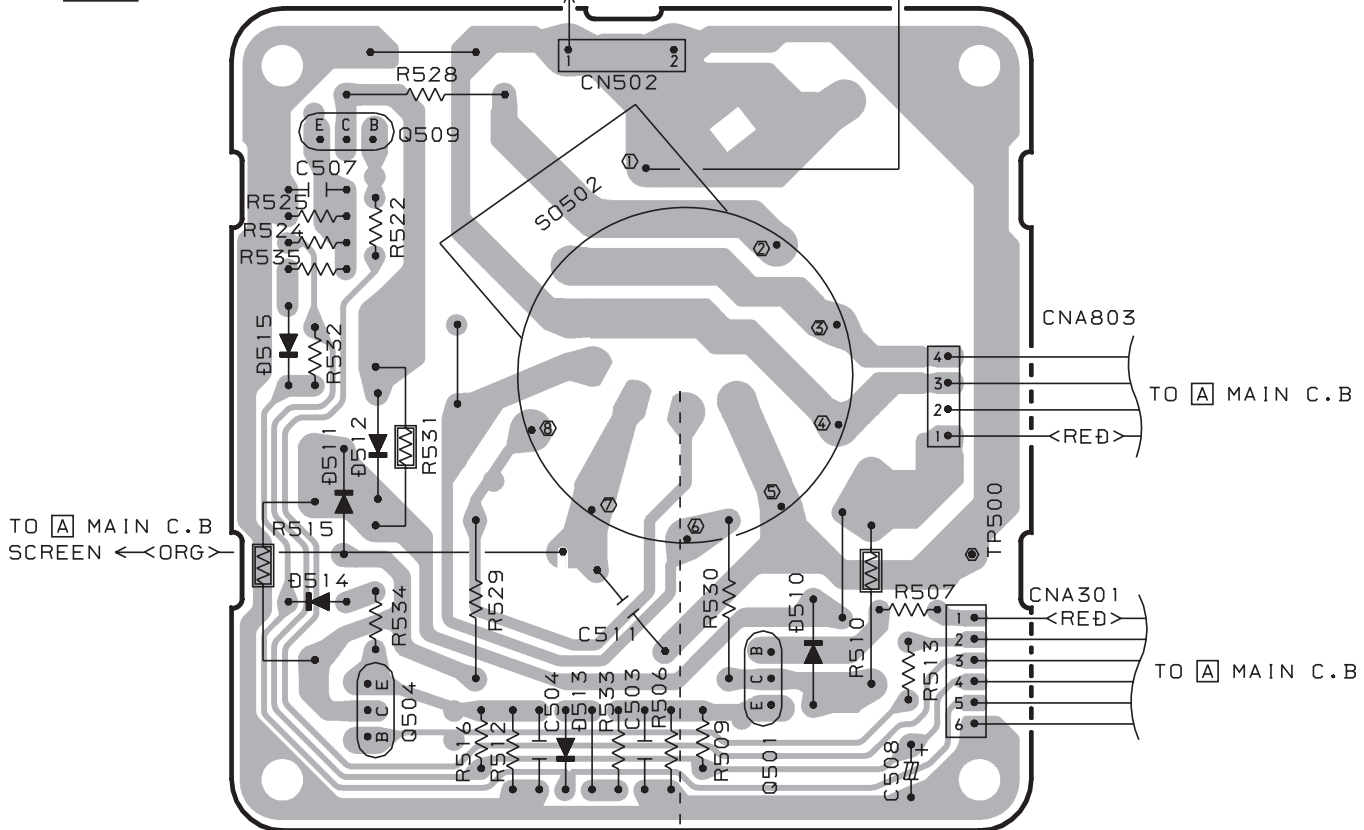
15	14	13	12	11	10	9	8	7	6	5	4	3	2	1
----	----	----	----	----	----	---	---	---	---	---	---	---	---	---

A
B
C
D
E
F
G
H
I
J
K
L
M
N
O
P
Q
R
S
T
U

FOR TV-C1418 KER7L4M, KER7S4M, TV-C143KEJG6C1M ONLY

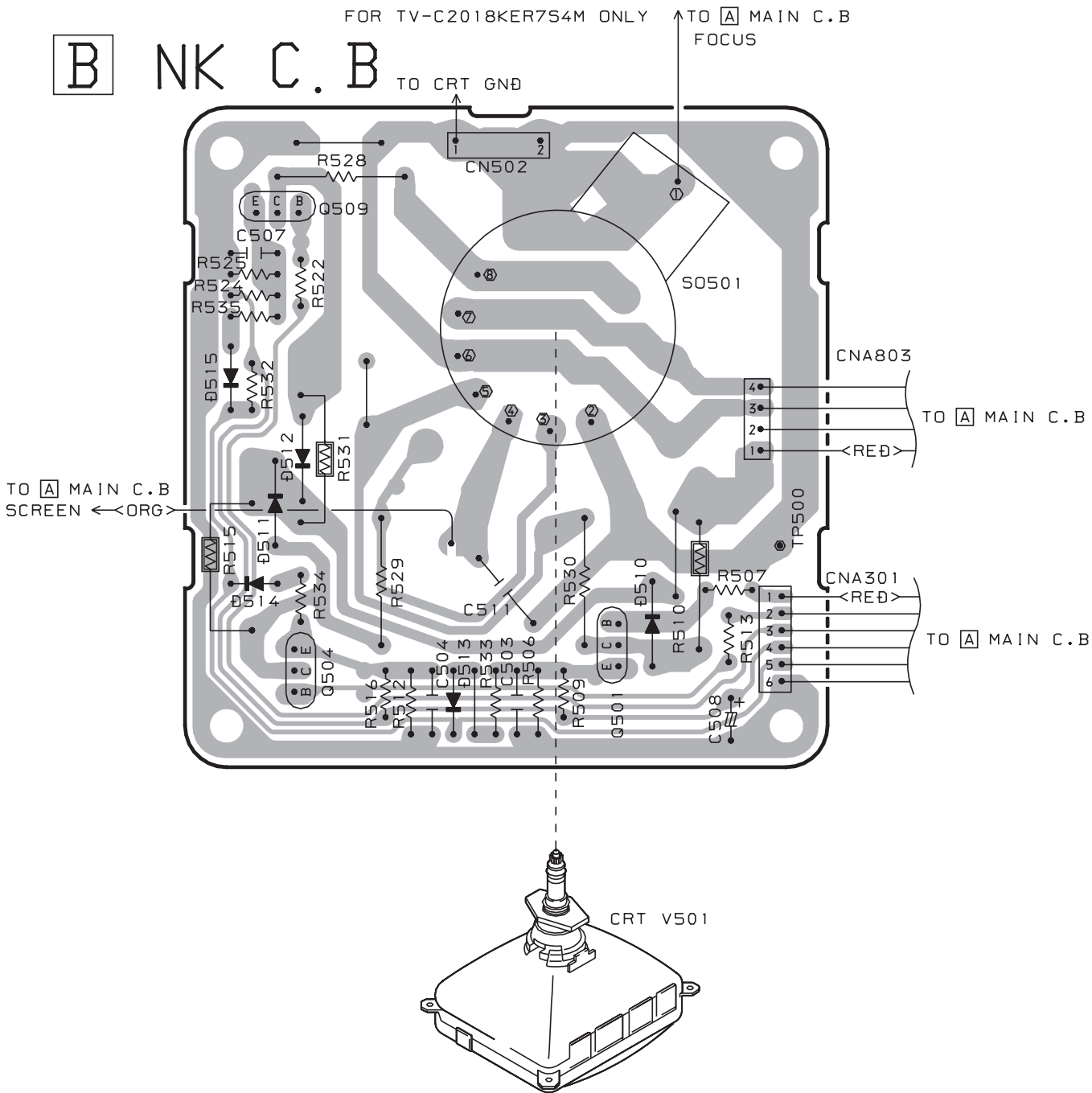
B NK C.B TO CRT GND

TO **A** MAIN C.B
FOCUS

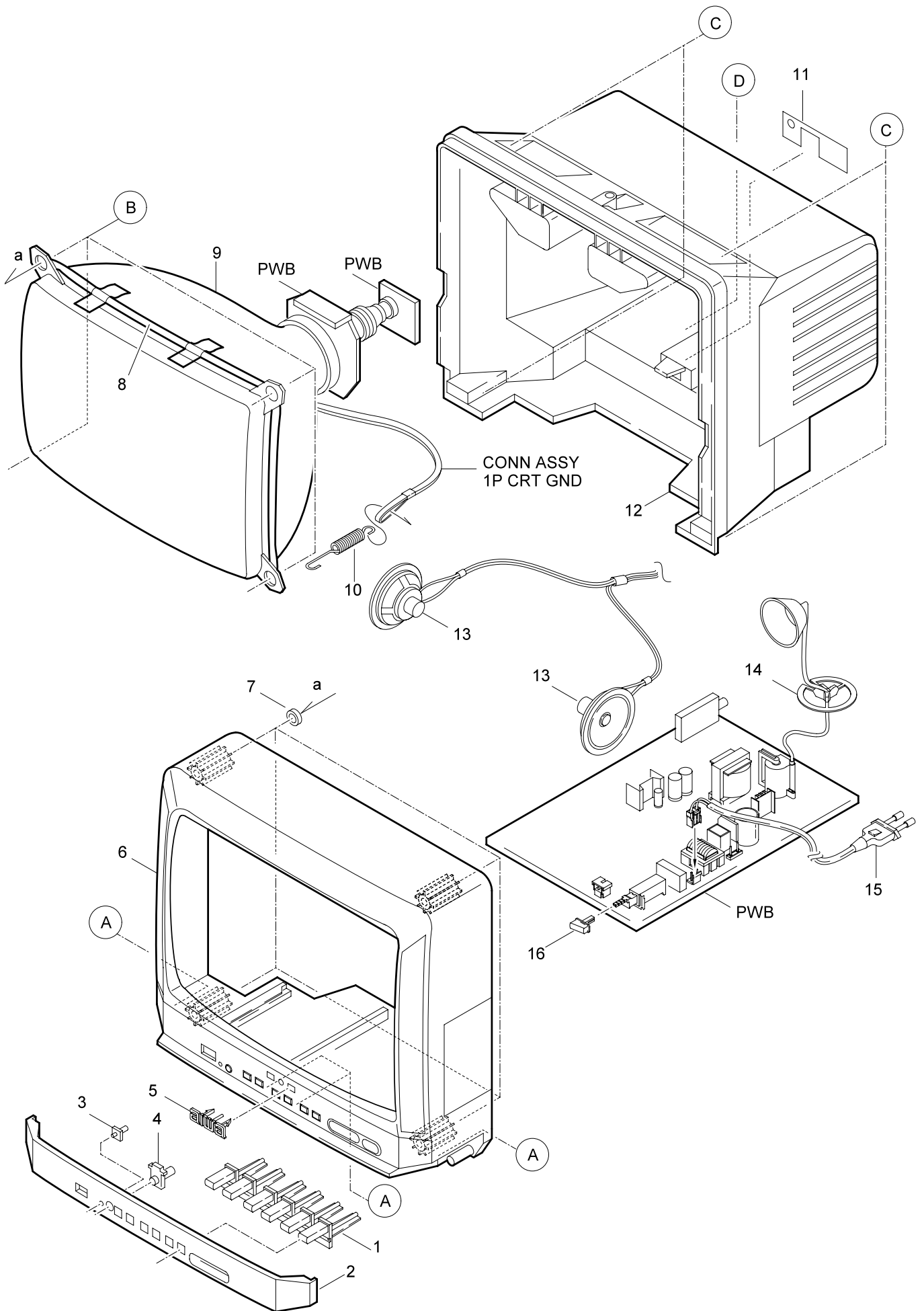


15	14	13	12	11	10	9	8	7	6	5	4	3	2	1
----	----	----	----	----	----	---	---	---	---	---	---	---	---	---

A
B
C
D
E
F
G
H
I
J
K
L
M
N
O
P
Q
R
S
T
U



MECHANICAL EXPLODED VIEW 1 / 1



MECHANICAL PARTS LIST 1 / 1

REF. NO.	PART NO.	KANRI NO.	DESCRIPTION
1	8Z-JBV-005-010		KEY,MAIN<143,1418>
1	8Z-JBT-005-010		KEY,MAIN<2018>
2	8Z-JB8-002-210		PANEL,FR C143KER<143>
2	8Z-JB6-011-010		PANEL,FR C2018 BL<2018>
2	8Z-JB8-018-010		PANEL,FR C1418 BL<1418KER7S4M>
2	8Z-JB8-017-010		PANEL,FR C1418 SL<1418KER7L4M>
3	8Z-JBV-008-010		LENS,LED<143,1418>
3	8Z-JBT-008-010		LENS,LED<2018>
4	8Z-JBV-009-010		LENS,RC<143,1418>
4	8Z-JBT-009-010		LENS,RC<2018>
5	87-054-087-010		BADGE,AIWA 40<143,1418>
5	87-054-086-010		BADGE,AIWA 52.5 ABS GLD<2018>
6	8Z-JB8-001-110		CABI,FR 2SP<1418KER7S4M>
6	8Z-JB8-016-010		CABI,FR 2SP BL<1418KER7L4M>
6	8Z-JB6-001-010		CABI,FR 2SP<2018>
6	8Z-JB8-021-010		CABI,FR 2SP GR<143>
7	8Z-JBS-205-010		W-G,10-20-2
△	8Z-JB8-640-010		DGC,14 90HM VRK<143,1418>
△	8Z-JB6-625-010		DGC,20 150HM VRK<2018>
△	87-JB9-602-010		CRT,A48AGY13X67N<2018>
△	9 86-LB7-606-010		CRT,A34AGT13X79N<1418>
△	9 86-LB7-608-010		CRT,A34JXV70X10N00<143>
10	84-LB3-205-010		SPR-E,EARTH
11	8Z-JB8-005-010		PLATE,REAR 4HL
12	8Z-JB6-004-010		CABI,REAR 4HL<2018>
12	8Z-JB8-004-010		CABI,REAR 4HL<143,1418>
13	8Z-JBV-641-010		SPKR,F 80 80HM 2W
14	87-A90-332-010		HLDL,SF-2001 HV CABLE<1418,2018>
14	87-A90-848-010		HLDL,HV CABLE DIT<143>
△	15 8Z-JB6-695-010		AC CORD SET,KE BLK
16	8Z-JBV-007-110		BTN,POWER 2<143,1418>
16	8Z-JBT-007-110		BTN,POWER 2<2018>
A	87-067-680-010		BVI T3+3-10
B	87-078-203-110		S-SCREW,W5-25<143,1418>
B	86-LBB-206-010		S-SCREW,ASSY TV5-40 W20<2018>
C	87-067-844-010		BVT2+4-16 BLK
D	87-067-761-010		TAPPING SCREW, BVT2+3-10

COLOR NAME TABLE

Basic color symbol	Color	Basic color symbol	Color	Basic color symbol	Color
B	Black	C	Cream	D	Orange
G	Green	H	Gray	L	Blue
LT	Transparent Blue	N	Gold	P	Pink
R	Red	S	Silver	ST	Titan Silver
T	Brown	V	Violet	W	White
WT	Transparent White	Y	Yellow	YT	Transparent Yellow
LM	Metallic Blue	LL	Light Blue	GT	Transparent Green
LD	Dark Blue	DT	Transparent Orange	GM	Metallic Green
YM	Metallic Yellow	DM	Metallic Orange	PT	Transparent Pink
LA	Aqua Blue				

アイワ株式会社 〒110-8710 東京都台東区池之端1-2-11 ☎03(3827)3111 (代表)
AIWA CO.,LTD. 2-11, IKENOHATA 1-CHOME, TAITO-KU, TOKYO 110, JAPAN TEL:03 (3827) 3111